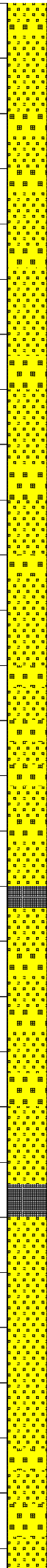


FV: 60
PV: 7
YP: 28
Gels: 16/18
WL: N/C
CK: 2
Sol: 1.5
pH: 9.0
Cl: 550

WOB: 0-6 klbs
RPM: 60-90
SPP: 300-400 psi
FLW: 368-500gpm



50

60

70

80

90

NIL GAS

SURVEY @ 47.0m: 0.5°

NO CO2
NO H2S

SANDSTONE:clr,trnsl,milky,gry,f-
v crs,v pr srt,sbang,sbrnd,occ
rnd,lse,uncons,gd inf por,no flour.

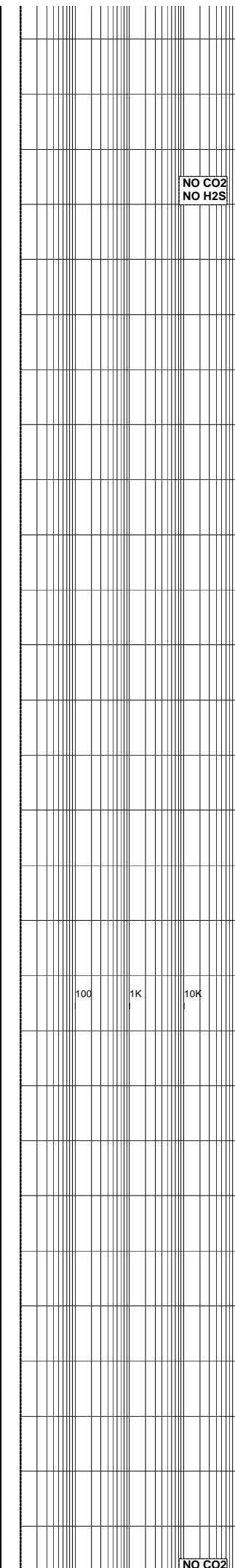
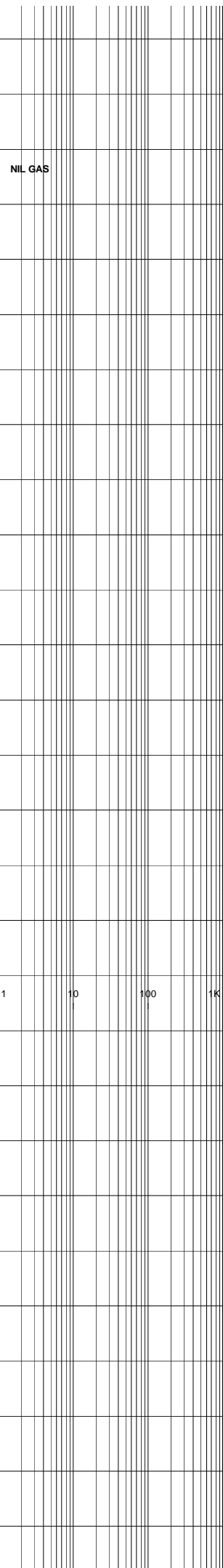
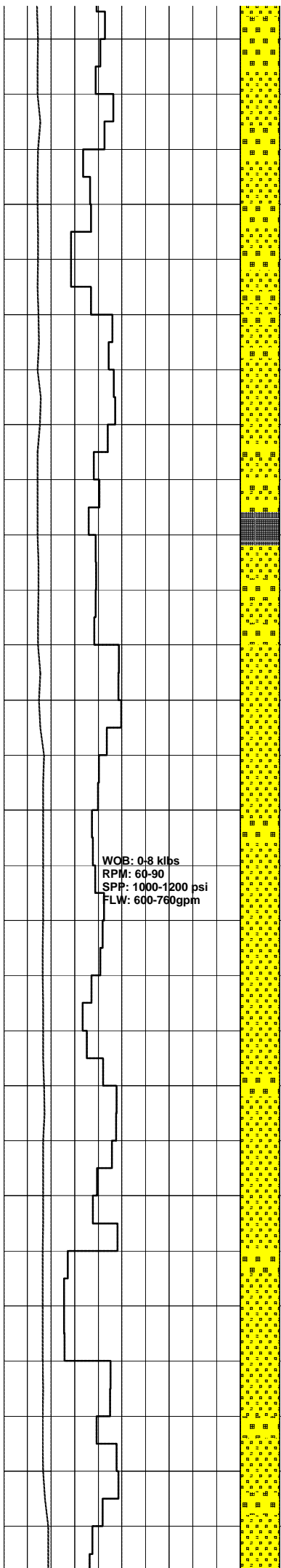
SANDSTONE:clr,trnsl,milky,gry,f-
v crs,v pr srt,sbang,sbrnd,occ
rnd,lse,uncons,gd inf por,no flour.

COAL:blk,dk brn,dll-ea,arg,sity
i/p,hckly.

SANDSTONE:clr,trnsl,milky,gry,f-
v crs,v pr srt,sbang,sbrnd,occ
rnd,lse,uncons,gd inf por,no flour.

COAL:blk,dk brn,dll-ea,arg,sity
i/p,hckly.

SANDSTONE:clr,trnsl,milky,gry,f-
v crs,v pr srt,sbang,sbrnd,occ
rnd,tr pyr,lse,uncons,gd inf por,
no flour.



SANDSTONE:clr,trnsl,miky,gry,f-
 v crs,v pr srt,sbang,sbrnd,occ
 rnd,tr pyr,lse,uncons,gd inf por,
 no flour.

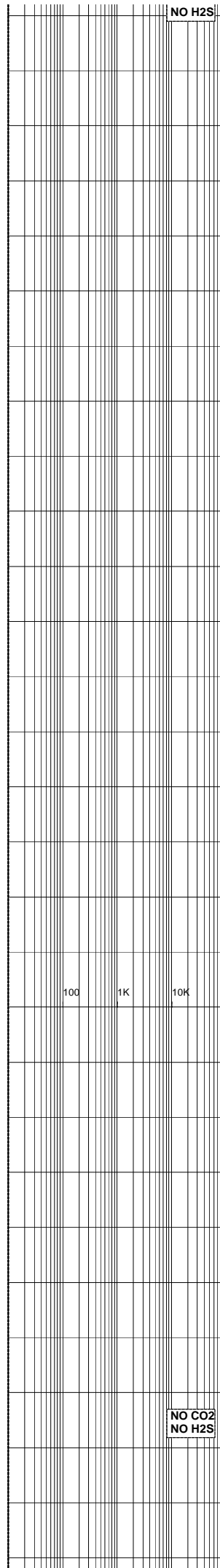
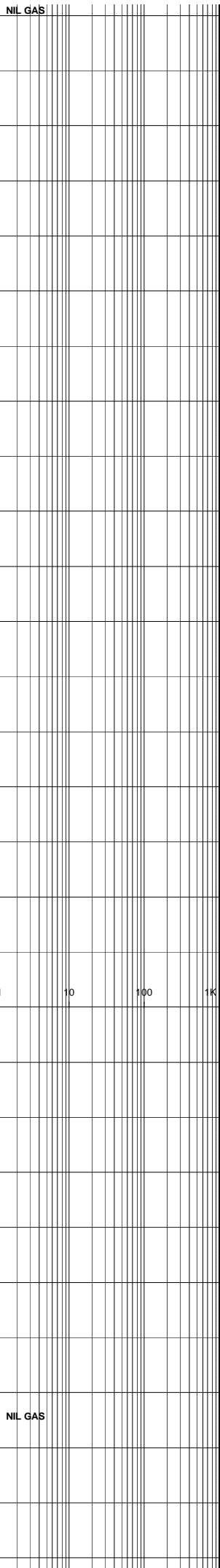
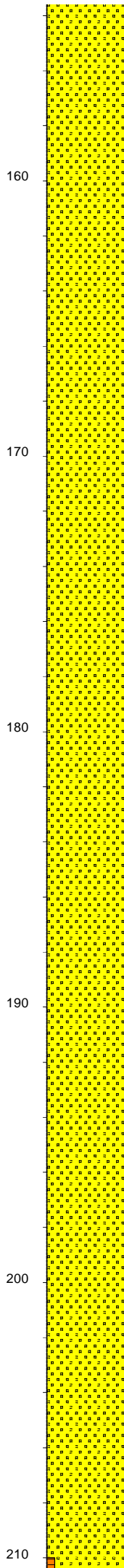
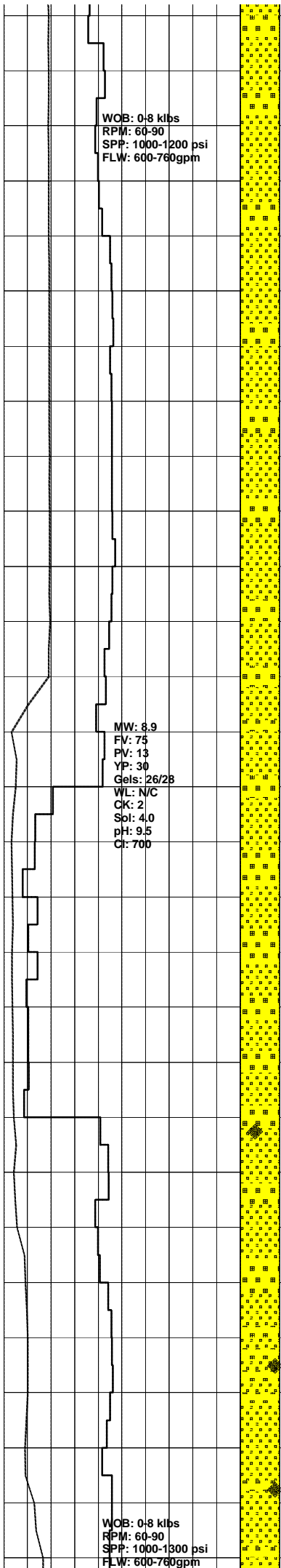
COAL:blk,dk brn,dll-ea,arg,sity
 i/p,hckly.

SANDSTONE:clr,trnsl,miky,gry,f-
 crs,pred med,pr srt,sbang,sbrnd,
 occ rnd,tr pyr,lse,uncons,gd inf
 por,no flour.

SURVEY @ 131.7m: 1.0° 32°T

SANDSTONE:clr,trnsl,miky,gry,f-
 crs,pred med,pr srt,sbang,sbrnd,
 occ rnd,tr pyr,lse,uncons,gd inf
 por,no flour.

NO CO2

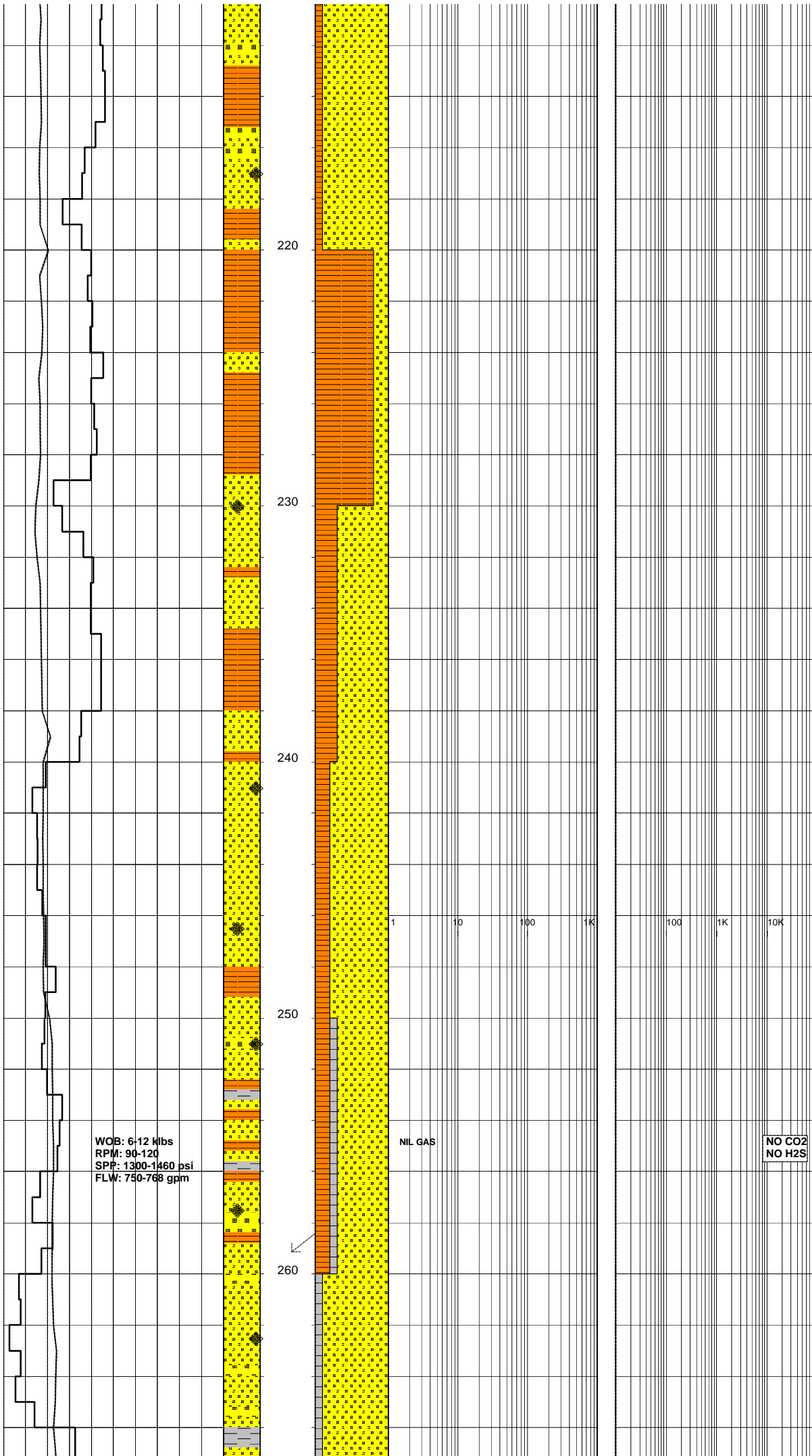


SANDSTONE:clr,trnsl,miky,gry,f-crs,pr srt,sbang,sbrnd,occ rnd,tr pyr,lse,uncons,gd inf por,no flour.

SANDSTONE:clr,trnsl,miky,gry,f-crs,pr srt,sbang,sbrnd,occ rnd,tr pyr,lse,uncons,gd inf por,no flour.

SANDSTONE:clr,trnsl,miky,gry,f-crs,pr srt,sbang,sbrnd,occ rnd,tr pyr,lse,uncons,gd inf por,no flour.

SANDSTONE:clr-trnsl,frstd,f-v crs,v pr srt,ang-sbang,mnr sbrnd,mnr pyr cmt i/p,occ frac grs,lse,uncons,gd inf por,no flour.



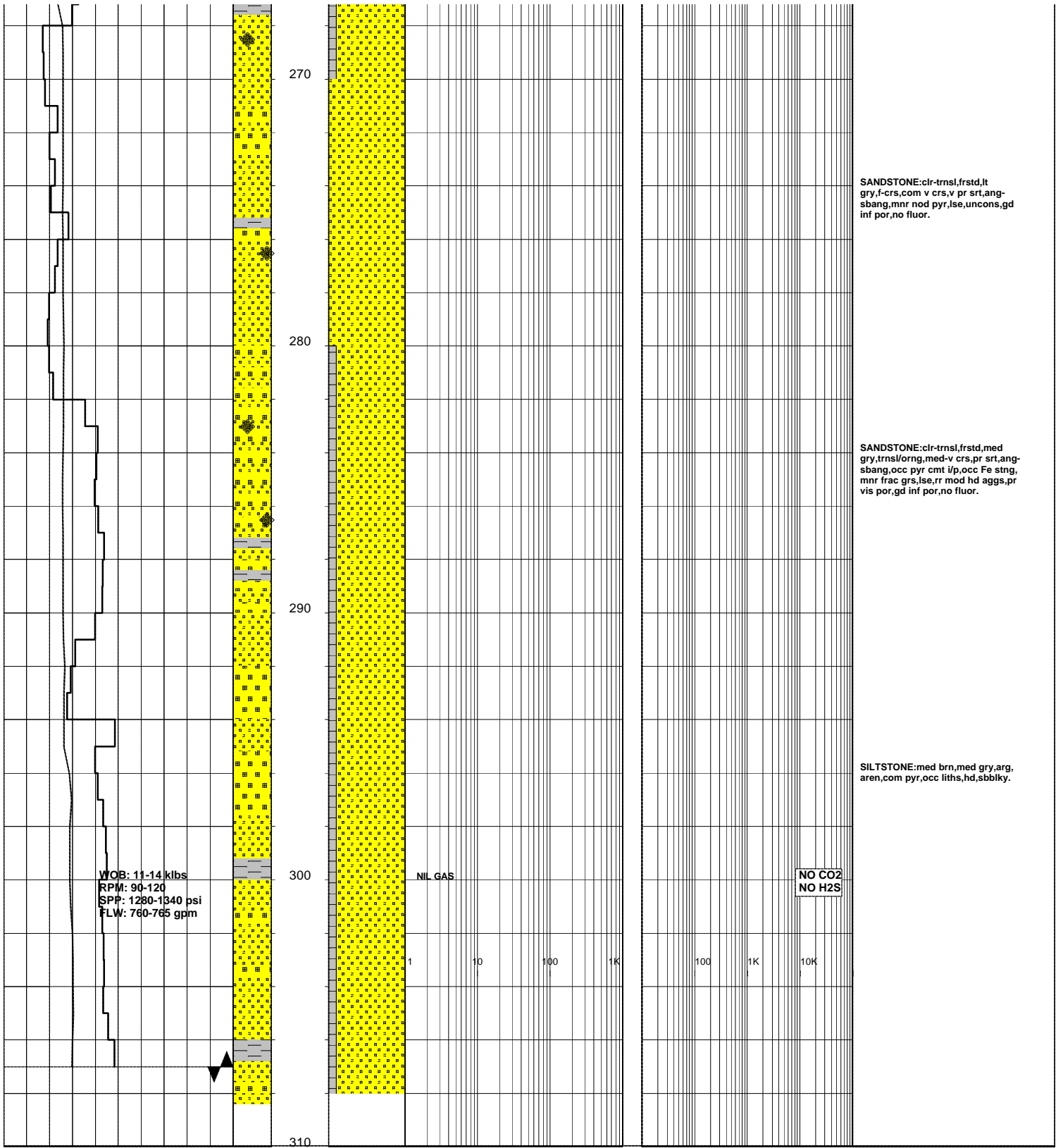
CLAYSTONE: v dk gry-blk, carb, grd to COAL i/p, disp, amorph, mnr sbbly.

SANDSTONE: clr-trnsl, frstd, f-v crs, v pr srt, ang-sbang, mnr sbrnd, tr pyr i/p, occ frac grs, lse, unconcs, gd inf por, no fluor.

CLAYSTONE: dk brn, v dk brn-blk, carb i/p, tr calc mat, stky, disp, sft, amorph.

SANDSTONE: clr-trnsl, lt gry, frstd, f-crs, occ v crs, pr srt, ang-sbang, occ pyr, lse, unconcs, gd inf por, no fluor.

SILTSTONE: tn, lt brn, arg, wk calc, occ liths, sft, sbbly.



SANDSTONE:clr-trnsl,frstd,lt gry,f-crs,com v crs,v pr srt,ang-sbang,mnr nod pyr,lse,uncons,gd inf por,no fluor.

SANDSTONE:clr-trnsl,frstd,med gry,trnsl/orng,med-v crs,pr srt,ang-sbang,occ pyr cmt i/p,occ Fe stng,mnr frac grs,lse,rr mod hd aggs,pr vis por,gd inf por,no fluor.

SILTSTONE:med brn,med gry,arg,aren,com pyr,occ liths,hd,sbbkly.

WOB: 11-14 klbs
 RPM: 90-120
 SPP: 1280-1340 psi
 FLW: 760-765 gpm

NIL GAS

NO CO2
 NO H2S

1 10 100 1K 100 1K 10K

